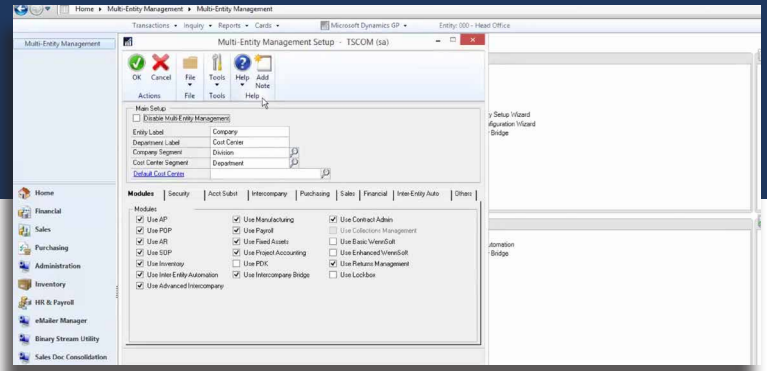


Multi-Entity Management

An intelligent solution to intercompany challenges



Whether you have 20 or 2000 entities, MEM's built-in automation and business logic streamlines complicated intercompany transactions with proper allocations and reporting.



Manage multiple entities within a single database in Microsoft Dynamics GP

Multi-Entity Management (MEM) for Microsoft Dynamics GP is an end-to-end solution for multi-company challenges from master record consolidation to balancing intercompany transactions. MEM directly embeds into your environment and introduces enterprise-grade capabilities to provide a comprehensive view of your different entities, helping you make better business decisions. Designed with flexibility in mind, MEM meets your company's unique needs to ensure your success regardless of the path you take to growth.



Origin	IC	Document Number	Type	Doc. Date	Original Amt	Unapplied Amt	Entity
Voucher/Payment Number			Due Date	Disc. Date	Transaction Description		Currency ID
DPEN		100INV-2	INV	4/12/2017	\$1,500.00	\$0.00	100
DPEN		200INV-1	INV	4/12/2017	\$2,500.00	\$0.00	200
DPEN		15647	INV	4/12/2017	\$666.67	\$666.67	200
DPEN		00000000000000000011	PMT	4/12/2017	\$1,000.00	\$1,000.00	200
DPEN		200INV-2	INV	4/12/2017	\$3,500.00	\$0.00	200
DPEN		300INV-1	INV	4/12/2017	\$1,200.00	\$0.00	300
DPEN		300INV-2	INV	4/12/2017	\$3,200.00	\$0.00	300

The Multi-Entity Management Advantage



Eliminate data errors and redundancy by sharing a single master record for customers, vendors, items, fixed assets, & more



Centralize the payables and receivables for any number of child/subsidiary entities to reduce potential errors from occurring during transactions



Meet your company's security needs by managing each individual user's access per entity



Include multiple legal entities in a single transaction with proper allocations and reporting



Streamline intercompany transactions, and complete the process from end to end within a single instance



Create audit-friendly reports across your entire organization and simplify your period-end process

